

KARIBAN

REFERENCE : K392

SIZES : XS_S_M_L_XL_XXL

COMPOSITION :

Fabric 1 : Organic cotton single jersey - 155 OCS certified
100% organic cotton

Fabric 1 : Organic cotton / viscose single jersey 70/30 - 155
OCS blended certified

For heather colors 70% organic cotton / 30% viscose

WEIGHT :

Fabric 1 : 155 gsm

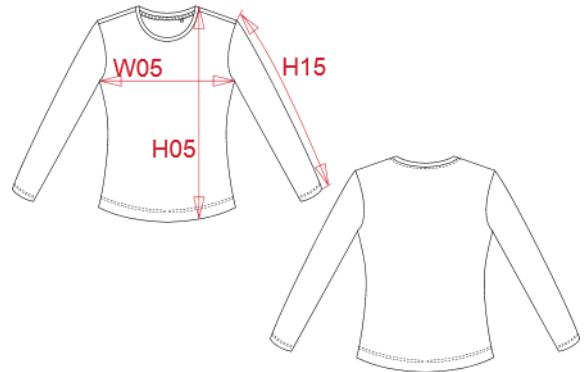
Fabric 1 : 155 gsm

TECHNICAL DETAIL :

Ladies' organic cotton crew neck long sleeve t-shirt OCS
certified

ARTICLE WEIGHT :

125 gr/pc



| DESCRIPTION |
|---|
| Français : T-shirt coton BIO col rond manches longues femme |
| English : Ladies' organic cotton crew neck long sleeve t-shirt |
| Nederlands : Dames-t-shirt BIO-katoen ronde hals lange mouwen |
| Deutsch : Damen Langarmshirt mit Rundhalsausschnitt. Aus Bio-Baumwolle |
| Español : Camiseta de algodón orgánico con cuello redondo y de manga larga |
| Italiano : T-shirt donna cotone BIO maniche lunghe e collo rotondo |
| Português : T-shirt BIO de manga comprida de senhora |

| COLORS | PANTONE SERIGRAPHIE |
|--------------|------------------------|
| Black | Black |
| Navy | 433C |
| Storm grey | 425C |
| Grey heather | Based on 417C |

| MEASUREMENT | | | | | | |
|---|----|-------|----|-------|----|-------|
| Description | XS | S | M | L | XL | XXL |
| H05 (L) Hauteur totale / Total height | 61 | 62,50 | 64 | 65,50 | 67 | 69,25 |
| W05 (L) 1/2 largeur poitrine / 1/2 chest width | 41 | 43 | 45 | 47 | 49 | 52 |
| H15 Longueur manche / Sleeve length | 59 | 60 | 61 | 62 | 63 | 64,25 |

| CARE LABEL |
|------------|
| |

| PACKING | |
|---------|---|
| Box | 25 pcs / box XS-S => L:40cm W:32cm H:14cm GW:6.00kg NW:4.80kg M-L => L:44cm W:34cm H:14cm GW:6.70kg NW:5.50kg XL-XXL => L:48cm W:36cm H:14cm GW:7.60kg NW:6.30kg |