

KARIBAN

REFERENCE : K479

SIZES : XS_S_M_L_XL_XXL_3XL_4XL

COMPOSITION :

Main fabric : Brushed cotton / polyester fleece 80/20 - 280 80% cotton / 20%polyester

Fabric 1 : Cotton single jersey (32/1) - 180 For tone on tone hood lining 100%cotton

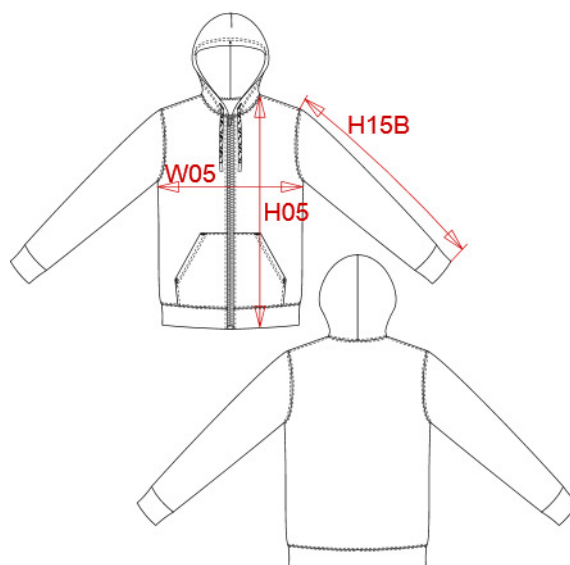
WEIGHT :

Main fabric : 280 gsm

Fabric 1 : 180 gsm

ARTICLE WEIGHT :

516 gr/pc



DESCRIPTION	
Français :	Sweat-shirt zippé capuche
English :	Full zip hoodie
Nederlands :	Sweater met rits en capuchon
Deutsch :	Kapuzensweatshirt mit Zip
Español :	Sudadera con capucha y cremallera
Italiano :	Felpa con cappuccio e zip
Português :	Sweatshirt com capuz e fecho

COLORS	PANTONE SERIGRAPHIE
White	White
Black	Black
Navy	433C
Dark grey	447C
Oxford grey	Based on Cool gray 7C
Red	200C
Light royal blue	653C
Yellow	1235C
Orange	1585C
Forest green	5605C
Wine	504C

MEASUREMENT									
Description	XS	S	M	L	XL	XXL	3XL	4XL	
H05 Hauteur totale avec BC / Total height with rib	69	71	73	75	77	79	81	83	
W05 1/2 largeur poitrine à 1.5cm de l'emmanchure / 1/2 chest width at 1.5 cm below armhole	49	52	55	58	61	64	67	70	
H15B Longueur manche avec poignet / Sleeve length with cuff	59	60,50	62	63,50	65	66,50	68	69,50	

CARE LABEL				

PACKING	
Box	20 pcs / box XS-S => L:58.1cm W:37.8cm H:32cm GW:10.20kg NW:8.80kg M-XXL => L:58.1cm W:37.8cm H:42cm GW:12.25kg NW:10.60kg 3XL-4XL => L:58.1cm W:37.8cm H:54cm GW:13.45kg NW:11.80kg