

CARTON	PACK	NO. SKU'S
12	3	40

**Fabric**

100% Polyester plain weave, 185gsm

Colours

Black, Hot Pink, Purple, Strawberry Red

Sizes

6, 8, 10, 12, 14, 16, 18, 20, 22, 24

Features

- Satin trim on across the neckline
- Mock wrap over
- Side vents
- Back zip fastening
- Princess seams
- Easycare

Country of Origin

China

Carton Dimensions

60cm x 44cm x 17cm

Carton Weight

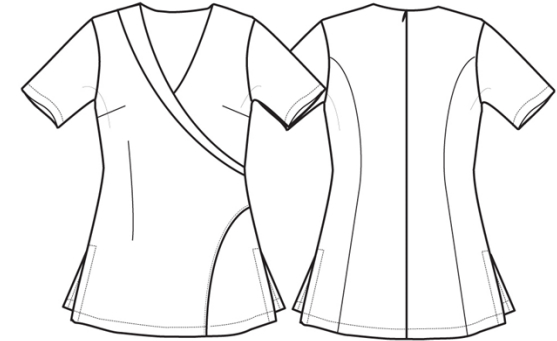
6.20 kg approx.

VAT Code

6211 43 1000

PR690**'ROSE' BEAUTY AND SPA TUNIC**

Colour	Pantone	C	M	Y	K
Black	Black	0	0	0	100
Hot Pink	214c	0	100	24	4
Purple	269	82	98	5	26
Strawberry	186	2	100	82	6
Turquoise	312	89	0	11	0



Size	6	8	10	12	14	16	18	20	22	24
Bust to fit "	31	33	35	37	39	41	43	45	47	49
Bust to fit cm	79	84	89	94	99	104	109	114	119	124
Call size	2XS	XS	S	M	L	XL	2XL	3XL	4XL	5XL
Bust actual cm	89	94	99	104	109	114	120	126	132	138
DE,NL	34	36	38	40	42	44	46	48	50	52
FR,ES,PT	34	36	38	40	42	44	46	48	50	52
IT	38	40	42	44	46	48	50	52	54	56
Back length cm	70	71	72	72	73	74	75	76	77	78

Marketing Description

The 'Rose' features an elegant self-coloured satin trim across the main body of the tunic to create the impression of a wrap-over style. The trim comes down from the shoulder, across the chest and finishes under the bust to create a flattering V-neck finish on the neckline. Bust darts and side vents make this a very flattering tunic.

